

DEPARTMENT OF THE ARMY TECHNICAL MANUAL

OPERATOR'S, ORGANIZATIONAL, DIRECT SUPPORT, AND GENERAL SUPPORT MAINTENANCE REPAIR PARTS AND SPECIAL TOOLS LISTS (INCLUDING DEPOT MAINTENANCE REPAIR PARTS AND SPECIAL TOOLS) MODULATION ELIMINATOR MX-1843/FRN-20 (FSN 5825-313-649)

Headquarters, Department of the Army, Washington, DC 28 February 1975

Current as of December 1974

SECTION I. INTRODUCTION Paragraph Page
Scope 1-1 2
General 1-2 2
Explanation of columns 1-3 2
Special information 1-4 4
Location of repair parts 1-5 4
Abbreviations (Not applicable) 1-6 5
Reporting of equipment manual improvements 1-7 5
II. BASIC ISSUE ITEMS LIST (Not applicable)
III. ITEMS TROOP INSTALLED OR AUTHORIZED LIST (Not applicable)
IV. PRESCRIBED LOAD ALLOWANCE (Not applicable)
V. REPAIR PARTS LIST 6
VI. SPECIAL TOOLS, TEST AND SUPPORT EQUIPMENT (Not applicable)
VII. REPAIR PARTS LIST " 7
VIII. SPECIAL TOOLS, TEST AND SUPPORT EQUIPMENT (Not applicable)
IX. INDEX- FEDERAL STOCK NUMBER AND REFERENCE NUMBER CROSS-REFERENCE TO FIGURE AND ITEM NUMBER 12

*This manual supersedes TM 11-5525-200-12P, 12 March 1959 and TM 11-5925-200-35P, 11 March 1959, including all changes.

SECTION I
INTRODUCTION

1-1. Scope

This manual lists basic issue items, items troop installed or authorized, repair parts, and special tools required by the crew/operator for operation and required for the performance of organizational, direct support, general support, and depot maintenance of the MX-1843/FRN-20. The PCCN for the MX-1343/FRN-20 is GANACE for all models.

1-2. General

This basic issue items, items troop installed or authorized, repair parts, and special tools list is divided into the following sections -

- a. *Basic Issue Items List - Section II.* Not applicable.
- b. *Items Troop Installed or Authorized List - Section III.* Not applicable.
- c. *Prescribed Load Allowance (PLA) - Section IV.* Not applicable.
- d. *Repair Parts List - Section V.* A list of repair parts authorized for the performance of maintenance at the organizational level. This repair parts list is arranged in alphabetical order.
- e. *Special Tools, Test and Support Equipment - Section VI.* Not applicable.
- f. *Repair Parts List - Section VII.* A list of repair parts authorized for the performance of maintenance at the direct support, general support, and depot level.
- g. *Special Tools, Test and Support Equipment - Section VIII.* Not applicable.
- h. *Index - Federal Stock Number and Reference Number Cross-Reference to Figure and Item Number - Section IX.* list, in ascending numerical sequence, of all Federal stock numbers appearing in the listings, followed by a list, in alphanumeric sequence, of all reference numbers appearing in the listings. Federal stock number and reference numbers are cross-referenced to each illustration figure and item number or reference designation appearance.

1-3. **Explanation of Columns**

The following provides an explanation of columns found in the tabular list.

a. *Source, Maintenance, and Recoverability Codes (SMR).*

(1) Source code. Indicates the manner of acquiring support items for maintenance, repair, or overhaul of end items. Source codes are:

Code	Explanation
P A -	Item procured and stocked for anticipated or

Code	Explanation
	known usage.
P B -	Item procured and stocked for insurance purposes because essentiality dictates that a minimum quantity be available in the supply systems.
PC -	Item procured and stocked and which otherwise would be coded PA except that it is deteriorative in nature.
P D -	Support item, excluding support equipment, procured for initial issue or outfitting and stocked only for subsequent or additional initial issues or outfittings. Not subject to automatic replenishment.
P E -	Support equipment procured and stocked for initial issue or outfitting to specified maintenance repair activities.
P F -	Support equipment which will not be stocked but which will be centrally procured on demand.
P G -	Item procured and stocked to provide for sustained support for the life of the equipment. It is applied to an item peculiar to the equipment which because of probable discontinuance or shutdown of production facilities would prove uneconomical to reproduce at a later time.
K D -	An item of depot overhaul/repair kit and not purchased separately. Depot kit defined as a kit that provides items required at the time of overhaul or repair.
KF --	An item of a maintenance kit and not purchased separately. Maintenance kit defined as a kit that provides an item that can be replaced at organizational or direct support or general support levels of maintenance.
K B -	Item included in both a depot overhaul/repair kit and a maintenance kit.
M O -	Item to be manufactured or fabricated at organizational level.
M F -	Item to be manufactured or fabricated at direct support maintenance level.
.MH -	Item to be manufactured or fabricated at general support maintenance level.
MD —	Item to be manufactured or fabricated at depot maintenance level.
A O -	Item to be assembled at organizational level.
A F -	Item to be assembled at direct support maintenance level.
.A H -	Item to be assembled at general support maintenance level.

<i>Code</i>	<i>Explanation</i>
AD	Item to be assembled at depot maintenance level.
XA	Item is not procured or stocked because the requirements for the item will result in the replacement of the next higher assembly.
XB	Item is not procured. If not available through salvage, requisition.
XC	Installation drawing, diagram instruction sheet, field service drawing, that is identified by manufacturers' part number.
XD	Support items can be requisitioned with justification.

NOTE

Cannibalization or salvage may be used as a source of supply for any items Source coded above except those coded XA and aircraft support items as restricted by AR 700-42.

(2) *Maintenance code.* Maintenance codes are assigned to indicate the levels of maintenance authorized to USE and REPAIR support items. The maintenance codes are entered in the third and fourth positions of the Uniform SMR Code format as follows:

{a) Use (third position). The maintenance code entered in the third position indicates the lowest maintenance level authorized to remove, replace, and use the support item. The maintenance code entered in the third position indicates one of the following levels of maintenance.

<i>Code</i>	<i>Application/Explanation</i>
o	Support item is removed, replaced, used at the organizational level of maintenance.

NOTE

A code "C" may be used in this position to denote crew or operator maintenance performed within organizational maintenance.

F	Support item is removed, replaced, used at the direct support maintenance level.
H	Support item is removed, replaced, used at the general support maintenance.
D	Support items that are removed, replaced, used at depot only.

(bj) *Repair (fourth position).* The maintenance code entered in the fourth position indicates whether the item is to be repaired and identifies the lowest maintenance level with the capability to perform complete repair (i.e., all authorized maintenance functions). When a maintenance code is not used a dash (-) sign is entered. For multiservice equipment/systems or when a code is entered, this position will contain one of the following maintenance codes as assigned by the service(s) that require

the code:
Code

Application/Explanation

O	The lowest maintenance level capable of complete repair of the support item is the organizational level.
F	The lowest maintenance level capable of complete repair of the support item is direct support.
H	The lowest maintenance level capable of complete repair of the support item is general support.
D	The lowest maintenance level capable of complete repair of the support item is the depot level.
L	Repair restricted to designated Specialized Repair Activity.
Z	Non-repairable. No repair is authorized.
B	No repair is authorized. The item may be reconditioned by adjusting, lubricating, etc., at the user level. No parts or special tools are procured for the maintenance of this item.

(3) *Recoverability code.* Recoverability codes are assigned to support items to indicate the disposition action on unserviceable items. The recoverability code is entered in the fifth position of the Uniform SMR Code format as follows:-

<i>code</i>	<i>Explanation</i>
Z	Nonrepairable item. When unserviceable, condemn and dispose at the level indicated in the first digit of the maintenance code.
O	Repairable item. When uneconomically repairable, condemn and dispose at organizational level.
F	Repairable item. When uneconomically repairable, condemn and dispose at the direct support level.
H	Repairable item. When uneconomically repairable, condemn and dispose at the general support level.
D	Repairable item. When beyond lower level repair capability, return to depot. Condemnation and disposal not authorized below depot level.
L	Repairable item. Repair, condemnation, and disposal not authorized below depot/Specialized Repair Activity level.
A	Item requires special handling or condemnation procedures because of specific reasons (i.e., precious metal content, high dollar value, critical material or hazardous material).

b. *Federal Stock Number.* Indicates the Federal stock number assigned to the item.

NOTE

For requisitioning purposes, the Federal stock number must be converted to the National stock number by adding "-00-" after the Federal stock classification (FSC) code (first four digits). For example, FSN 6625-553-0142 converts to NSN 6625-00-553-0142.

c. Description. Indicates the Federal item name and a minimum description required to identify the item. The last line indicates the reference number followed by the applicable Federal Supply Code for Manufacturer (FSCM) in parentheses. The FSCM is used as an element in item identification to designate manufacturer or distributor or Government agency, etc., and is identified in SB 70842.

d. Unit of Measure (U/M). Indicates the standard or basic quantity by which the listed item is used in performing the actual maintenance function. This measure is expressed by a two-character alphabetical abbreviation, e.g., ea, in, pr, etc., and is the basis used to indicate quantities and allowances in subsequent columns. When the unit of measure differs from the unit of issue, the lowest unit of issue that will satisfy the required units of measure will be requisitioned.

e. Quantity Furnished with Equipment (Basic Issue Items Only). Not applicable.

f. Quantity Authorized (Items Troop Installed or Authorized Only). No - applicable.

g. Quantity Incorporated in Unit. This column indicates the quantity of the item used in the equipment. Subsequent appearances of the same item in the same assembly are indicated by the letters "REF".

h. 15-Day Organizational Maintenance Allowances.

(1) The repair parts indicated by an asterisk in the allowance column represent those authorized for use at the organizational category, and will be requisitioned on an "as required" basis, until stockage is based on demand in accordance with AR 710-2.

(2) Major Army commanders are authorized to approve reduction in the range of support items authorized for use in units within their commands. Recommendations for increase in range of items authorized for use will be forwarded to Commander, US Army Electronics Command, ATTN: AMSEL-MA-AN, Fort Monmouth, NJ 07703.

(3) Allowance quantities are indicated in the special tools list section for special tools, TMDE, and other support equipment.

i. 30-Day DS/GS Maintenance Allowances.

NOTE

Allowances in GS column are for GS

maintenance only.

(1) The repair parts indicated by asterisk entries, in separate allowance columns for DS and GS represent those authorized for use at that category of maintenance to be requisitioned on an "as required" basis, until stockage is based on demand in accordance with AR 710-2.

(2) Allowance quantities are indicated in the special tool lists section for special tools, TMDE, and other support equipment.

j. 1-Year Allowances Per 100 Equipments/Contingency Planning Purposes. Column intentionally left blank

k. Depot Maintenance Allowance Per 100 Equipments. This column indicates opposite the first appearance of each item the total quantity authorized for depot maintenance of 100 equipments.

l. Illustration.

(1) *Figure number.* Not applicable.

(2) *Item number.* Indicates the item number or reference designation used to reference the item.

1-4. Special Information

Usable on codes are included in column 3. Uncoded items are applicable to all models. Identification of the usable on codes used in this publication are:

Code	Used on
A8Q	MX-1843/FRN-20

1-5. Location of Repair Parts

a. This manual contains one cross reference index (sec IX) to be used to locate a repair part when either the Federal stock number or reference number (manufacturer's part number) is known. The first column in the index is prepared in numerical or alphanumeric sequence in ascending order. The reference numbers (manufacturer's part numbers) are listed immediately following the last listed Federal stock number in the index of Federal stock numbers.

b. When the Federal stock number or reference number is known, follow the procedures given in (1) and (2) below.

(1) Refer to the index of Federal stock numbers (sec IX), and locate the Federal stock number or reference number. The FSN and reference number are cross-referenced to the applicable figure and item number or reference designation.

(2) Refer to the repair parts list (sec V and VII) and locate the figure number (col 7a — 20P, 10a — 34P) and item number or reference designation (col 7b — 20P, 10b — 34P) as noted in the FSN index.

c. When the figure and item number or reference designation are known, scrutinize columns 7a and 7b — 20P and 10a and 10b — 35P, of the repair parts

list (sec V and VII) until the item is located.

d. When the FSN, reference number, figure number, and item number are not known, scrutinize column 3 of the repair parts list (sec V and VII), which is arranged in alphabetical order.

1-6. Abbreviations

Not applicable.

1-7. Reporting of Equipment Manual Improvements

The reporting of errors, omissions, and recommendations for improving this publication by the individual user is encouraged. Reports should be submitted on DA Form 2023 (Recommended Changes to Publications and Blank Forms) and forwarded direct to Commander, US Army Electronics Command, ATTN: AMSEL-MA-AN, Fort Monmouth, NJ 07703.

SECTION V

TM11-5925-200-14P

(1) SMB CODE	(2) FEDERAL STOCK NUMBER	(3) DESCRIPTION REFERENCE NUMBER & MFR CODE USABLE ON CODE		(4) UNIT OF MEAS	(5) QTY. INC OR UNIT	(6) 15-DAY ORGANIZATIONAL MAINTENANCE ALW				(7) ILLUSTRATION	
						(a)	(b)	(c)	(d)	(e) FIGURE NO	(f) OR NO
						1-5	6-20	21-50	51-100		
PAC12	5920-200-8342	FUSE CARTRIDGE .51 USED ON MODEL M2-1043/FRN-20 ON ORDER 2470: PH-54 AND ON ORDER 42747-PH-57		EA	1	*	*	*	*		F2
PAC12	5355-164-7866	F02G1R00A (81349) INDB NO-REF-DESIG USED ON MODEL M2-1043/FRN-20 IN ORDER 24702-PH-54 AND ON ORDER 42747-PH-57 RD W/BAA FACE, ARROW MARKING, FOR 1/4 IN DIA SHAFT, 1.1 1389ARROW (11242)		EA	1	*	*	*	*		

SWR CODE	FEDERAL STOCK NUMBER	DESCRIPTION REFERENCE NUMBER & MFR. CODE USABLE ON CODE	UNIT OF MEAS.	QTY IN UNIT	30-DAY QS MANT ALLOWANCE			30-DAY QS MANT ALLOWANCE			ALW PER 100 EQUIP CATEG.	DEPOT ALW PER 100 EQUIP	CLASSIFICATION	
					(a)	(b)	(c)	(a)	(b)	(c)			(a)	(b)
					1-20	21-50	51-100	1-20	21-50	51-100			FIGURE NO	ITEM NO
PAFZZ		ADAPTER, CONNECTOR NO-REF-DEF SIG USED ON MODEL MX-1843/FRN-20 ON ORDER 24782-PH-54 AND ON ORDER 42747-PH-57	EA	1	*	*	*	*	*	*		4		
PAFZZ	6625-668-9177	AMMETER #2 USED ON MODEL MX-1843/FRN-20 ON ORDER 24782-PH-54 AND ON ORDER 42747-PH-57	EA	1	*	*	*	*	*	*		3		M3
PAFZZ	5910-527-7321	CAPACITOR, FIXED, CERAMIC DIELECTRIC USED ON MODEL MX-1843/FRN-20 ON ORDER 24782-PH-54 AND ON ORDER 42747-PH-57	C2	EA	1	*	*	*	*	*		3		C2
PAFZZ	5910-539-7889	CAPACITOR, FIXED, CERAMIC DIELECTRIC USED ON MODEL MX-1843/FRN-20 ON ORDER 24782-PH-54 AND ON ORDER 42747-PH-57	C5	EA	1	*	*	*	*	*		3		C5
XDPZZ		CAPACITOR, FIXED, CERAMIC DIELECTRIC USED ON MODEL MX-1843/FRN-20 ON ORDER 24782-PH-54 AND ON ORDER 42747-PH-57	C6	EA	1	*	*	*	*	*				C6
XDPZZ		CAPACITOR, FIXED, CERAMIC DIELECTRIC USED ON MODEL MX-1843/FRN-20 ON ORDER 24782-PH-54 AND ON ORDER 42747-PH-57	C8	EA	1	*	*	*	*	*				C8
XDPZZ		CAPACITOR, FIXED, CERAMIC DIELECTRIC USED ON MODEL MX-1843/FRN-20 ON ORDER 24782-PH-54 AND ON ORDER 42747-PH-57	C9	EA	1	*	*	*	*	*				C9
XDPZZ		CAPACITOR, FIXED, CERAMIC DIELECTRIC USED ON MODEL MX-1843/FRN-20 ON ORDER 24782-PH-54 AND ON ORDER 42747-PH-57	C11	EA	1	*	*	*	*	*				C11
XDPZZ		CAPACITOR, FIXED, ELECTROLYTIC USED ON MODEL MX-1843/FRN-20 ON ORDER 24782-PH-54 AND ON ORDER 42747-PH-57	C3	EA	1	*	*	*	*	*				C3
XDPZZ		CAPACITOR, FIXED, MICA DIELECTRIC USED ON MODEL MX-1843/FRN-20 ON ORDER 24782-PH-54 AND ON ORDER 42747-PH-57	C1...	EA	1	*	*	*	*	*				C1
XDPZZ		CAPACITOR, FIXED, MICA DIELECTRIC USED ON MODEL MX-1843/FRN-20 ON ORDER 24782-PH-54	C4...	EA	1	*	*	*	*	*				C4
PAFZZ		CAPACITOR, FIXED, MICA DIELECTRIC USED ON MODEL MX-1843/FRN-20 ON ORDER 42747-PH-57	C4...	EA	1	*	*	*	*	*		3		C4
PAFZZ		CAPACITOR, FIXED, PAPER DIELECTRIC USED ON MODEL MX-1843/FRN-20 ON ORDER 24782-PH-54 AND ON ORDER 42747-PH-57	C10..	EA	2	*	*	*	*	*		3		C10

SECTION VII

TM11-5925-200-14P

(1) WAR CODE	(2) FEDERAL STOCK NUMBER	(3) DESCRIPTION REFERENCE NUMBER & MFR. CODE USABLE ON CODE	(4) UNIT OF MEAS.	(5) QTY REQ UNIT	(6) 30-DAY BS MAINT ALLOWANCE			(7) 30-DAY CS MAINT ALLOWANCE			(8) ITE ALN PER 100 EQUIP COSTCTY	(9) DEPOT MAINT ALN PER 100 EQUIP	(10) ILLUSTRATION	
					(a)	(b)	(c)	(a)	(b)	(c)			(a)	(b)
					1-20	21-40	41-100	1-20	21-40	41-100			FUSIBLE NO.	FRONT NO.
PAF22	5910-120-1678	CAPACITOR, FIXED, PAPER DIELECTRIC C12... USED ON MODEL MX-1843/FRN-20 ON ORDER 24782-PH-54 AND ON ORDER 42747-PH-57 CP40C2E7405K (81349)	EA	REF	*	*	*	*	*	*				C12
PAF22	5910-552-1360	CAPACITOR, VARIABLE, AIR DIELECTRIC C7... USED ON MODEL MX-1843/FRN-20 ON ORDER 24782-PH-54 AND ON ORDER 42747-PH-57 J60-104-4 (174970)	EA	1	*	*	*	*	*	*		2		C7
PAF22	5940-204-5785	CLIP, ELECTRICAL NO-REF-DESIG USED ON... MODEL MX-1843/FRN-20 ON ORDER 24782-PH-54 AND ON ORDER 42747-PH-57 L175 (174963)	EA	1	*	*	*	*	*	*		3		
PAF22	5950-645-9280	COIL, RADIO FREQUENCY L1 USED ON MODEL MX-1843/FRN-20 ON ORDER 24782-PH-54 AND ON ORDER 42747-PH-57 Z144 (44455)	EA	4	*	*	*	*	*	*		3		L1
PAF22	5950-645-9220	COIL, RADIO FREQUENCY L2 USED ON MODEL MX-1843/FRN-20 ON ORDER 24782-PH-54 AND ON ORDER 42747-PH-57 Z144 (44455)	EA	REF	*	*	*	*	*	*				L2
PAF22	5950-645-9280	COIL, RADIO FREQUENCY L4 USED ON MODEL MX-1843/FRN-20 ON ORDER 24782-PH-54 AND ON ORDER 42747-PH-57 Z144 (44455)	EA	REF	*	*	*	*	*	*				L4
PAF22	5950-645-9280	COIL, RADIO FREQUENCY L5 USED ON MODEL MX-1843/FRN-20 ON ORDER 24782-PH-54 AND ON ORDER 42747-PH-57 Z144 (44455)	EA	REF	*	*	*	*	*	*				L5
PAF22	5950-952-6437	COIL, RADIO FREQUENCY L3 USED ON MX-... 1843/FRN-20 ON ORDER 42747-PH-57 42157 (45597)	EA	1	*	*	*	*	*	*		3		L3
XD722		FUSEHOLDER NO-REF-DESIG USED ON MODEL... MX-1843/FRN-20 ON ORDER 24782-PH-54 AND ON ORDER 42747-PH-57 F4019G (81349)	EA	1	*	*	*	*	*	*				
XD722		CONNECTOR, PLUG, ELECTRICAL P14 USED ON MODEL MX-1843/FRN-20 ON ORDER 42747-PH-57 UG21EU (80058)	EA	2	*	*	*	*	*	*				P14
XD722		CONNECTOR, PLUG, ELECTRICAL P15 USED ON MODEL MX-1843/FRN-20 ON ORDER 42747-PH-57 UG21EU (80058)	EA	REF	*	*	*	*	*	*				P15
PAF22		CONNECTOR, RECEPTACLE, ELECTRICAL J1... USED ON MODEL MX-1843/FRN-20 ON ORDER 24782-PH-54 AND ON ORDER 42747-PH-57 UG58U (80058)	EA	3	*	*	*	*	*	*		3		J1
PAF22		CONNECTOR, RECEPTACLE, ELECTRICAL J2... USED ON MODEL MX-1843/FRN-20 ON ORDER 24782-PH-54 AND ON ORDER 42747-PH-57 UG58U (80058)	EA	REF	*	*	*	*	*	*				J2
PAF22		CONNECTOR, RECEPTACLE, ELECTRICAL J3... USED ON MODEL MX-1843/FRN-20 ON ORDER 24782-PH-54 AND ON ORDER 42747-PH-57 UG58U (80058)	EA	REF	*	*	*	*	*	*				J3

(1) SHE CODE	(2) FEDERAL STOCK NUMBER	(3) DESCRIPTION REFERENCE NUMBER & MFR. CODE	(4) QTY REQD	(5) UNIT	(6) 30-DAY DEMANT ALLOWANCE			(7) 30-DAY QS MANT ALLOWANCE			(8) I-FX ALY PER CUNT. CONTACT	(9) DEPOT MANT ALY PER EQP	(10) ILLUSTRATION	
					(a)	(b)	(c)	(a)	(b)	(c)			(a)	(b)
					1-20	21-30	31-100	1-20	21-30	31-100			FIGURE NO.	ITEM NO.
PAFZZ	5335-665-4486	CONNECTOR, PLUG, ELECTRICAL P10 USED ON M33EL M4-1843/FRN-20 ON ORDER 24782-PM-54 2716 (103530)	EA	1	*	*	*	*	*	*		3		P10
PAFZZ	5935-255-1883	CONNECTOR, PLUG, ELECTRICAL P12 USED ON M33EL M4-1843/FRN-20 ON ORDER 24782-PM-54 9872 (174545)	EA	1	*	*	*	*	*	*		3		P12
XDPZZ		CONNECTOR, ACCEPTACLE, ELECTRICAL J4... USED ON MODEL M4-1843/FRN-20 ON ORDER 24782-PM-54 AND ON ORDER 42747-PM-57 664343-5 (000005)	EA	1	*	*	*	*	*	*				J4
PAFZZ	5935-642-3330	CONNECTOR, RECEPTACLE, ELECTRICAL J5... USED ON MODEL M4-1843/FRN-20 ON ORDER 24782-PM-54 AND ON ORDER 42747-PM-57 91974F (02440)	EA	1	*	*	*	*	*	*		3		J5
XDPZZ		ELECTRON TUBE V1 USED ON MODEL M4-1843/FRN-20 ON ORDER 24782-PM-54 AND ON ORDER 42747-PM-57 6846 (011500)	EA	1	*	*	*	*	*	*				V1
XDPZZ		ELECTRON TUBE V2 USED ON MODEL M4-1843/FRN-20 ON ORDER 24782-PM-54 AND ON ORDER 42747-PM-57 6766 (011500)	EA	1	*	*	*	*	*	*				V2
XDPZZ		ELECTRON TUBE V3 USED ON MODEL M4-1843/FRN-20 ON ORDER 24782-PM-54 AND ON ORDER 42747-PM-57 6097 PART OF PART NUMBER 5726-6AL506097 (011500)	EA	1	*	*	*	*	*	*				V3
XDPZZ		ELECTRON TUBE V4 USED ON MODEL M4-1843/FRN-20 ON ORDER 24782-PM-54 AND ON ORDER 42747-PM-57 3R4WGA (011500)	EA	1	*	*	*	*	*	*				V4
PACZZ	5920-280-8342	FUSE CARTRIDGE F1 USED ON MODEL M4-1843/FRN-20 ON ORDER 24782-PM-54 AND ON ORDER 42747-PM-57 F02G1800A (011500)	EA	1	*	*	*	*	*	*		50		F1
PAFZZ	5970-356-0550	INSULATOR, STANDOFF NO-REF-DESIG USED ON MODEL M4-1843/FRN-20 ON ORDER 24782-PM-54 AND ON ORDER 42747-PM-57 1783A (11590)	EA	5	*	*	*	*	*	*		3		
XDPZZ		INSULATOR, STANDOFF NO-REF-DESIG USED ON MODEL M4-1843/FRN-20 ON ORDER 24782-PM-54 AND ON ORDER 42747-PM-57 NS4W0104 (011500)	EA	1	*	*	*	*	*	*				
PACZZ	5355-164-7886	NO-REF-DESIG USED ON MODEL M4-1843/FRN-20 ON ORDER 24782-PM-54 AND ON ORDER 42747-PM-57 RD W/8AR FACE, ARROW MARKING, FOR 1/4 IN DIA SHAFT, 1 1/2 1008WARR0W (11242)	EA	1	*	*	*	*	*	*		3		
PAFZZ	5950-645-3569	REACTOR L6 USED ON MODEL M4-1843/FRN-20 ON ORDER 24782-PM-54 AND ON ORDER 42747-PM-57 15765 (173306)	EA	1	*	*	*	*	*	*		2		L6

SECTION VII

TM11-5525-200-14P

(1) SAC CODE	(2) FEDERAL STOCK NUMBER	(3) DESCRIPTION	(4) UNIT OF MEAS	(5) QTY IN UNIT	(6) 20-DAY QS UNIT ALLOWANCE			(7) 20-DAY QS UNIT ALLOWANCE			(8) D. YR EQUIP GROUP	(9) D. YR EQUIP GROUP	(10) ILLUSTRATION	
					(a)	(b)	(c)	(a)	(b)	(c)			(a)	(b)
					1-20	21-20	21-00	1-20	21-20	21-00			FIGURE	REF ID
XDPZZ		SOCKET, ELECTRON TUBE 1X1 USED ON MODEL M4-1043/FRN-20 ON ORDER 24782-P10-54 AND ON ORDER 42747-P10-57 9977 (71705)	EA	3	*	*	*	*	*	*				A 10
XDPZZ		SOCKET, ELECTRON TUBE 1X2 USED ON MODEL M4-1043/FRN-20 ON ORDER 24782-P10-54 AND ON ORDER 42747-P10-57 9977 (71705)	EA	REF	*	*	*	*	*	*				A 12
XDPZZ		SOCKET, ELECTRON TUBE 1X4 USED ON MODEL M4-1043/FRN-20 ON ORDER 24782-P10-54 AND ON ORDER 42747-P10-57 9977 (71705)	EA	REF	*	*	*	*	*	*				A 14
PAFZZ	5935-686-9655	SOCKET, ELECTRON TUBE 1X3 USED ON MODEL M4-1043/FRN-20 ON ORDER 24782-P10-54 AND ON ORDER 42747-P10-57 9977 (71705)	EA	1	*	*	*	*	*	*		3		A 13
PAFZZ	5915-578-1446	SUPPRESSOR, PARASITIC MD-REF-DESIG USED ON MODEL M4-1043/FRN-20 ON ORDER 42747-P10-57 50403 (65597)	EA	1	*	*	*	*	*	*		5		
XDPZZ		SWITCH, ROTARY 220.0 USED ON MODEL M4-1043/FRN-20 ON ORDER 24782-P10-54 AND ON ORDER 42747-P10-57 67427P102 (76854)	EA	1	*	*	*	*	*	*				

SECTION IX

TM11-5925-200-14P

INDEX-FEDERAL STOCK NUMBER AND REFERENCE NUMBER CROSS-REFERENCE TO FIGURE AND TYPE NUMBER

STOCK NUMBER	FIGURE NO.	TYPE NO.	STOCK NUMBER	FIGURE NO.	TYPE NO.
5905-164-7806					
5905-101-3666		R6	5925-686-9955		X13
5905-141-0590		R10	5925-904-4050		
5905-185-6946		R4	5925-974-5418		X1
5905-192-3987		R5	5925-974-5418		X2
5905-221-4483		R9	5925-974-5418		X3
5905-218-6748		R2	5945-204-2705		
5910-100-8349		C4	5945-259-1239		X0
5910-120-1678		C10	5950-552-0437		X3
5910-120-1678		C12	5950-645-3969		X6
5910-239-7689		C5	5950-645-9280		X1
5910-252-1300		C7	5950-645-9280		X2
5910-277-7921		C2	5950-645-9280		X4
5915-278-1446			5950-645-9280		X5
5920-280-8342		F1	5960-686-8219		
5925-259-1083		F12	5970-256-0550		
5925-642-3330		J5	6625-118-9177		X0
5925-669-4406		F10			

REFERENCE NO.	MFR CODE	FIG. NO.	TYPE NO.	REFERENCE NO.	MFR CODE	FIG. NO.	TYPE NO.
A10P902E	12697		R2	0658H	80058		X1
A20K	12697		R6	0658H	80058		X2
CC21C090D	81350		C6	0658H	80058		X3
CC2681101H	81350		C5	W4.J	75642		X7
CC30C1430G	81350		C8	X793A	71598		
CC30C1470G	81349		C2	Z144	44657		X3
CM2CC-01	81349		C1	Z144	44655		X2
CM258103K	81349		C4	Z144	44657		X4
CM40B103K	81350		C4	Z144	44655		X5
CP40C2EP405K	81349		C10	1088WARRON	11242		
CP40C2EP405K	81349		C12	15785	73286		X6
FNH19G	81349			160-104-4	74970		C7
FO2G10CA	81349		F1	175	79963		
G1434-3	09805		J4	2716	0253H		F10
KR1883-1	77342		K1	3211H(1000POM200UUF	72982		X11
N84W0104	81350			42157	65597		X
RA25A13102AK	81350		R3	494279PH2	76854		
RBE7A2000F	81349		R7	504WGA	81350		X4
RC20GF102K	81349		R10	50603	65597		
RC20GF104K	81349		R5	531	82386		X0
RC20GF474K	81349		R4	5726-6ALL5W6097	81350		X3
RC32GF100J	81349		R8	636C	81350		X2
RC32GF273K	81349		R1	6146	81350		X1
RC42GF221K	81349		R3	658230	53071		C3
RN29C312	81350		R2	8585-1000	71390		C5
TS102701	81350		XV3	91804F	02660		J5
TS102701	81349			9972	74545		X12
UC21RF	80058		F14	9977	71785		XW1
UC21RF	80058		F15	9977	71785		XW2
UC278E	80058			9977	71785		XW4

By Order of the Secretary of the Army:

Official:

VERNE L. BOWERS
Major General, United States Army
The Adjutant General

FRED C. WEYAND
General, United States Army
Chief of Staff

Distribution:

To be distributed in accordance with DA Form 12-36, (qty rqr block No. 256). Organizational maintenance requirements for AN/FRN-20.

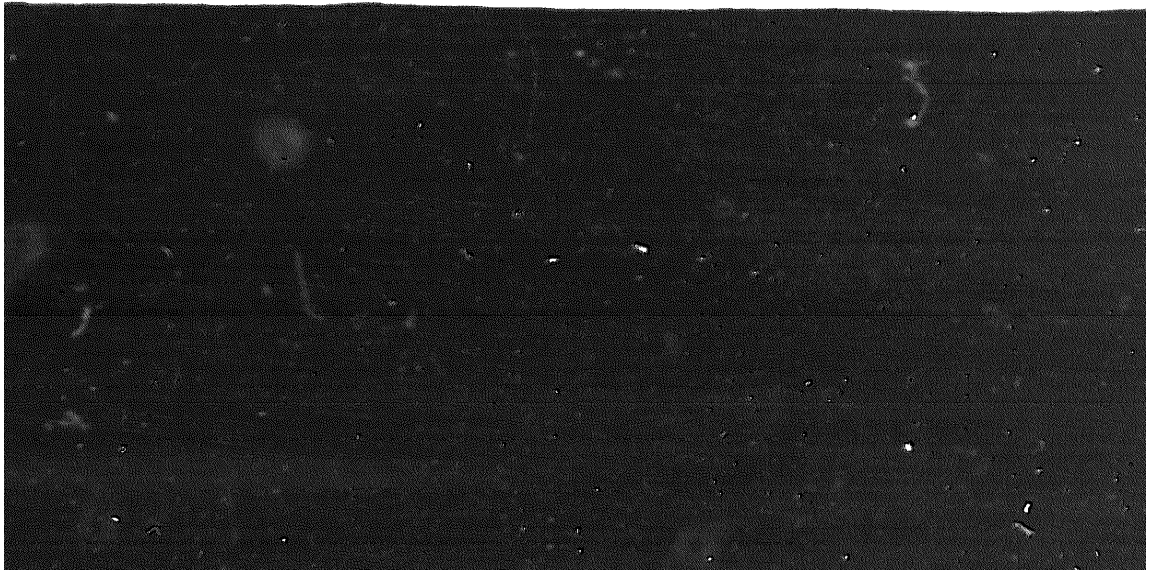
•U.S. GOVERNMENT PRINTING OFFICE: 1981-341-062/1066

END

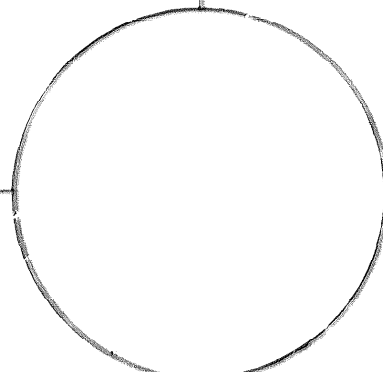
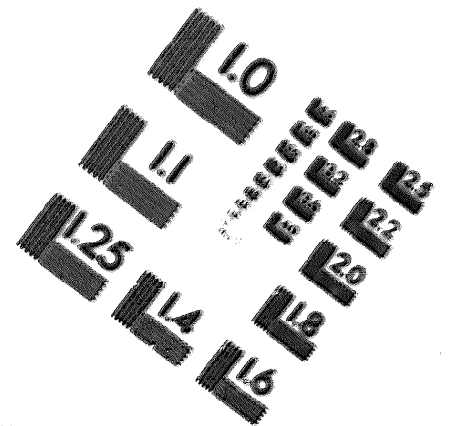
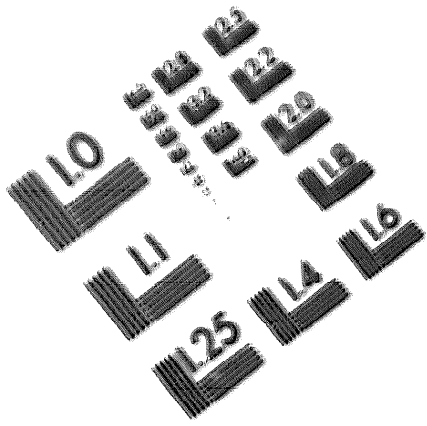
2-08-82

DATE





DEPARTMENT OF THE ARMY
MICROFORM
TEST TARGET



150 MM

1.0 mm (ø= 41 mm)

ABCDEFGHIJKLMN OPQRSTUVWXYZ 1234567890
abcdefghijklmnopqrstuvwxyz 012345678901234567890

1.5 mm (ø= 1.09 mm)

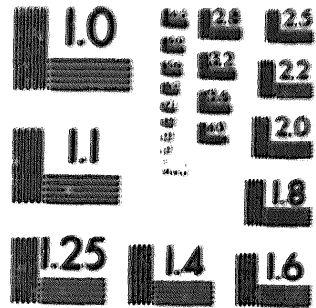
ABCDEFGHIJKLMN OPQRSTUVWXYZ 1234567890
abcdefghijklmnopqrstuvwxyz 012345678901234567890

2.0 mm (ø= 1.37 mm)

ABCDEFGHIJKLMN OPQRSTUVWXYZ
abcdefghijklmnopqrstuvwxyz
123456789012345678901234567890

2.5 mm (ø= 1.77 mm)

ABCDEFGHIJKLMN OPQRSTUVWXYZ
abcdefghijklmnopqrstuvwxyz
123456789012345678901234567890



1.0 mm (ø= 41 mm)

ABCDEFGHIJKLMN OPQRSTUVWXYZ 1234567890
abcdefghijklmnopqrstuvwxyz 012345678901234567890

1.5 mm (ø= 1.09 mm)

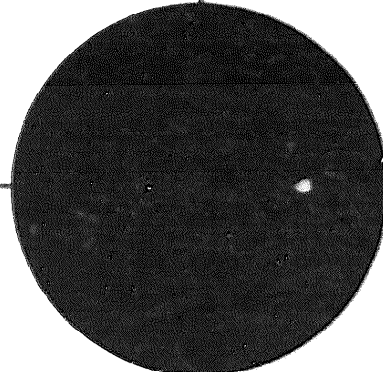
ABCDEFGHIJKLMN OPQRSTUVWXYZ 1234567890
abcdefghijklmnopqrstuvwxyz 012345678901234567890

2.0 mm (ø= 1.37 mm)

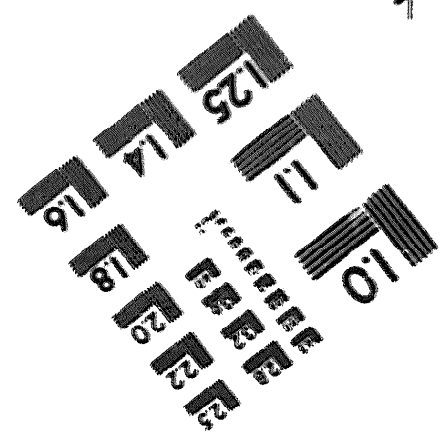
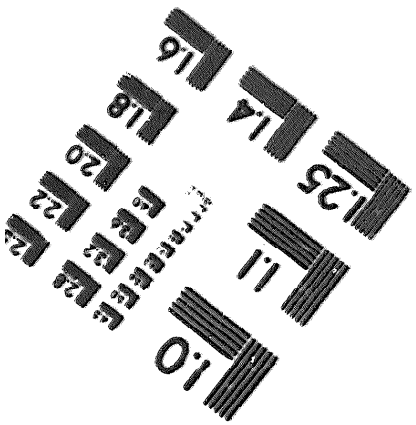
ABCDEFGHIJKLMN OPQRSTUVWXYZ
abcdefghijklmnopqrstuvwxyz
123456789012345678901234567890

2.5 mm (ø= 1.77 mm)

ABCDEFGHIJKLMN OPQRSTUVWXYZ
abcdefghijklmnopqrstuvwxyz
123456789012345678901234567890



200 MM



250 MM